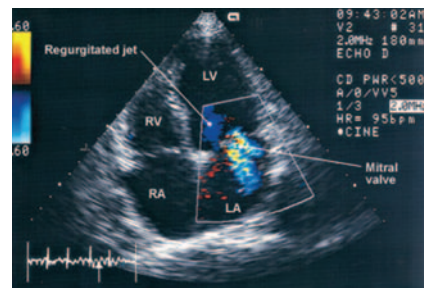


Echocardiography now available

Obtaining an echocardiogram has become a simple and affordable process with the addition of the procedure at NQXS.



Using the most modern technology available for echo, our GE Logic 7 acquires and constructs volume images to provide real-time scans of your patients' heart. In addition to providing spatial orientation, the Logic 7 provides access to critical internal views. This allows us to quantify shape, size and volume, and to pinpoint abnormalities with confidence and accuracy.

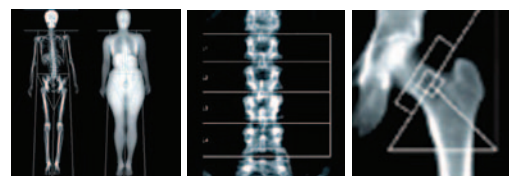
For patients who experience chest pain or irregular heartbeats, an echocardiogram is a

valuable screening tool to either discount a heart condition or determine that a specialist referral is required. To provide the best possible care and ensure an accurate diagnosis, we have employed dedicated and highly-skilled staff to perform this procedure.

Echo appointments are readily accessible and are generally available within 2 weeks of contacting our practice.

Bone Densitometry predicts best therapy for your patient

The early detection and successful management of osteoporosis is now a reality with technology that recommends the best treatment for your patient.



With our newly installed Lunar DPX Pro, our DEXA scans provide consistent, accurate & fast results, with all diagnoses based on the World Health Organisations' criteria for osteoporosis.

The scan is performed in as little as 15 minutes and is a vital tool for measuring bone mineral density (BMD) following a fracture or

chronic BMD treatment. Your patients are classified as normal, osteopenic or osteoporotic and as part of their results, are provided with suggested therapies for your consideration.

Same day appointments are usually achieved with procedures bulk billed as per HIC guidelines.

FAQ: What are your Reporting Times?

NQXS are committed to reporting the results of all patients in a timely and accurate manner. With this in mind, our radiologists work to the following timeframes:

| | |
|------------------|--|
| General exams | Reported within 1 hour |
| Ultrasound exams | Reported within 2 hours |
| CT exams | Reported within 3 hours |
| | <i>The maximum wait for these reports is 4 hours</i> |
| Echo exams | Reported within 48 hours |

- All reports are delivered electronically via Healthlink
- Hardcopy reports are available on request
- Urgent results are reported directly to the referrer at the time of discovery

Please contact our radiologist directly to clarify any diagnostic outcomes.

Dr Malcolm J Hudson

Dr David Latham

Dr Robbin Waterhouse

Dr Jacqui Stumpel

CAIRNS PRACTICE

ABN 75 327 483 513

126 Mulgrave Rd

Cairns QLD 4870

TEL. 07 4041 3188

TOWNSVILLE PRACTICE

ABN 46 097 351 016

252 Ross River Rd

Townsville QLD 4814

TEL. 07 4779 3711

SERVICES BULK BILLED

in accordance with HIC guidelines

OPEN 7 DAYS



Technology Update November/December 2005

Multi-Slice CT: Bringing pathologies to life

The ability to perform an Angiogram in as little as 5 minutes is just one of the latest advancements in Computed Tomography (CT).

Available now at North Queensland X-Ray Services (NQXS), advanced scanning techniques such as CT Angiography are providing practitioners with new and effective ways to manage their patient's health.

Through the introduction of 3D imaging technology, our 16-Slice Aquilion CT Scanner is the reason for these advancements. Installed in our rooms in both Townsville and Cairns, the Aquilion takes 16 x 0.5 mm slices on each half-second gantry rotation to produce the thinnest image slices achievable on the market today.

The result is crystal clear imaging that can be manipulated in any plane with no loss of clarity. From a single examination, our software can remove or reconstruct soft tissue, vascular and/or skeletal structures to view a pathology in great detail.

Aside from improving our diagnostic accuracy, the technology of the Aquilion-16 and our ability to reconstruct its data allows us to save patient images as stills and / or movie

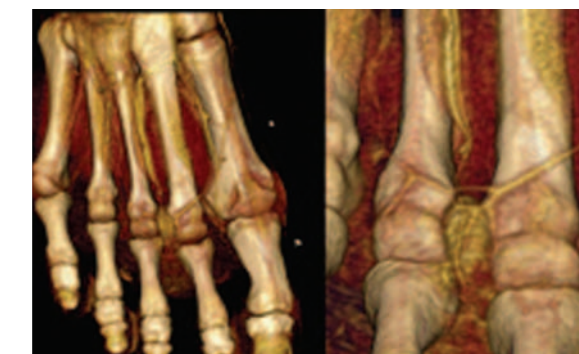
files. On request, these can be provided to you on CD for secondary examination.

Through this new technology, we offer procedures that you may not be aware of.

To demonstrate the impact of the Aquilion-16, what follows is an overview of our new range of services, together with examples of the pathologies they can be used to diagnose.

CT Angiography (CTA):

CTA is a quick and minimally invasive procedure that allows us to examine blood vessels in high definition 3D detail. Using a simple intravenous injection of contrast medium, the resulting image can be manipulated to remove overlying struc-



What's Inside:

| | |
|--------|--|
| Page 1 | Multi-Slice CT: Bringing pathologies to life |
| Page 2 | 4D Ultrasound improves accuracy |
| Page 4 | Echocardiography now available |
| Page 4 | Bone Densitometry predicts best therapy |



At North Queensland X-Ray Services, we are committed to providing the best in diagnostic care. For this reason, we are pleased to announce the installation of state-of-the-art technologies in our rooms in Townsville and Cairns. Through high clarity images, advanced diagnostic technology and ongoing training, you can be confident our staff will help you achieve the best course of action for your patients.

Multi-slice CT cont.

tures and produce detailed arterial trees of the area of interest. For example, we can use CTA for:

Head & Neck: Detect and evaluate an aneurysm in the brain, carotid disease, or vertebral artery insufficiency

Thoracic & Abdominal Aortic: Detect atherosclerosis or dissection of the aorta

Renal: Identify stenosis as a cause of hypertension

Femoral: Detect femoral artery disease or evaluate the cause of poor venous return using long leg runoffs

Pulmonary: Diagnose or discount a pulmonary embolism as a cause of chest pain

Orthopaedic Imaging:

- View joints such as the knee, wrist or ankle in high definition and intricate detail
- Detect bony abnormalities

Abdominal & Pelvic Pathologies:

- Diagnose and evaluate ovarian, endometrial, bladder or cervical cancers
- Detect renal calculi
- Diagnose & monitor liver disease

Sinus Diseases:

- Demonstrate acute or chronic inflammation of the paranasal sinuses

IAM and Mastoid:

- Ideal for pre-assessment imaging

4D Ultrasound improves accuracy

The introduction of 4D technology has quite literally changed the face of ultrasound by providing more accurate and detailed rendered images. Most importantly, it has improved our ability to assess for fetal abnormalities during early pregnancy.

At NQXS, we have embraced this new technology with the installation of several new machines across the group, the most impressive of which is our Voluson 730 Expert.

Performing up to 40 volume scans per second, the Voluson is the most advanced ultrasound system on the market for gynaecological and obstetric applications. While providing exceptional 2D images for traditional analysis, it's the Voluson's ability to create clear and recognisable 4D scans that gener-

ates the most excitement.

Using the volume scanner, we are now able to store and reconstruct patient data in a 3D view, which means results can be rendered and manipulated in any plane to provide a clear diagnostic image. This can occur both during or after an examination, enabling us to re-examine a patient long after they've left the clinic.

And we're not just restricted to external surfaces. Through volume imaging, we can now reconstruct internal systems such as the fetal heart and spinal column, and store the resulting images as movie clips or picture files. This is particularly valuable when examining a scan such as a fetal heart, which can be difficult to capture.

Aside from improving the quality of care, 4D images are readily understood by patients - a



quality that is particularly beneficial when trying to explain a fetal abnormality. With images able to be saved to CD, 'baby's first photo' can be an important part of the bonding experience, especially for parents who are faced with a difficult birth.

We understand and cater for the needs of Women's Health imaging. Through 4D technology, our service range has risen to a whole new level.

Obstetrics:

First Trimester: Viability testing and Nuchal Translucency scans (Downs Syndrome screening)

Second / Third Trimester: Fetal morphology, growth and wellbeing scans

- Diagnosis and assessment of fetal abnormalities such as cleft lip, spina bifida, club foot and heart defects
- STIC analysis (4D Heart Imaging)

Gynaecology:

- Assessment of pelvic disorders, pain, bleeding and infertility
- The addition of a 3D transvaginal probe, which provides multiplanar imaging and increases the accuracy of diagnostic outcomes
- Reconstruction of uterine malformations and abnormalities in the coronal plane
- 3D assessment of the ovaries

These services are in addition to our ability to assess for general health, musculoskeletal & vascular conditions.

FAQ: What Services Can I Refer For?

As a bulk billing provider of diagnostic imaging, we provide an inexpensive option for your patients at a time when their health is the important consideration. With same day appointments available for most procedures*, registered practitioners can refer for all NQXS examinations.

Examinations include:

- Computed Tomography
- Doppler / Duplex Ultrasound
- IVP
- Bone Densitometry
- Echocardiography
- Mammography
- Ultrasound
- General X-Ray

*except where patient preparation is required

