



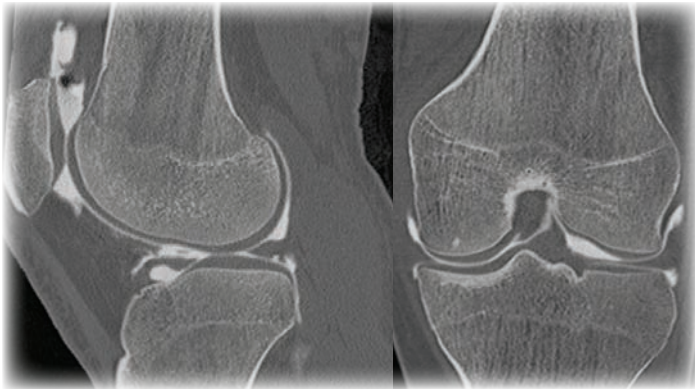
KNEE ARTHROGRAM

Excellent for:

- Assessment of articular cartilage surfaces (comparable to MRI for diagnostic quality)
- Identification of meniscal tears & intra-articular loose bodies
- Visualisation of soft tissues such as ligaments & periarticular soft tissues

Main indications for referral:

- History of anterior knee pain that may be attributable to maltracking of the patella
- Suspected meniscal tears or chondral surface injury
- What is involved:
- Aspiration of fluid (if present) to prevent dilution of the contrast
- Knee joint injected with contrast



- Joint mobilised to coat cartilage & menisci
- CT performed with patient supine & knee extended

IMPORTANT NOTES:

This leaflet is a guide to the major uses of Multislice CT Scanning Technology (MSCT) and is designed to be a quick reference tool only. It is not a complete list and the use of each procedure depends on the clinical situation of the patient.

From a single examination, MSCT rapidly acquires thin slices that can be reconstructed in 3D in any plane. Aside from improving our diagnostic accuracy, this enables us to provide the images to you on CD when requested.

All procedures indicated are available at North Queensland X-Ray Services* and are recognised for bulk billing on referral from a General Practitioner.

CAIRNS

ABN 75 327 483 513

126 Mulgrave Road, Cairns, QLD 4870 * ##

TEL. 07 4041 3188

SMITHFIELD

ABN 75 327 483 513

Campus Shopping Village, Smithfield, QLD 4878

TEL. 07 4057 5800

TOWNSVILLE

ABN 46 097 351 016

252 Ross River Road, Aitkenvale, QLD 4814 *

All Appointments:

295 Ross River Road, Aitkenvale, QLD 4814

TEL. 07 4779 3711

531 Ross River Road, Cranbrook, QLD 4814

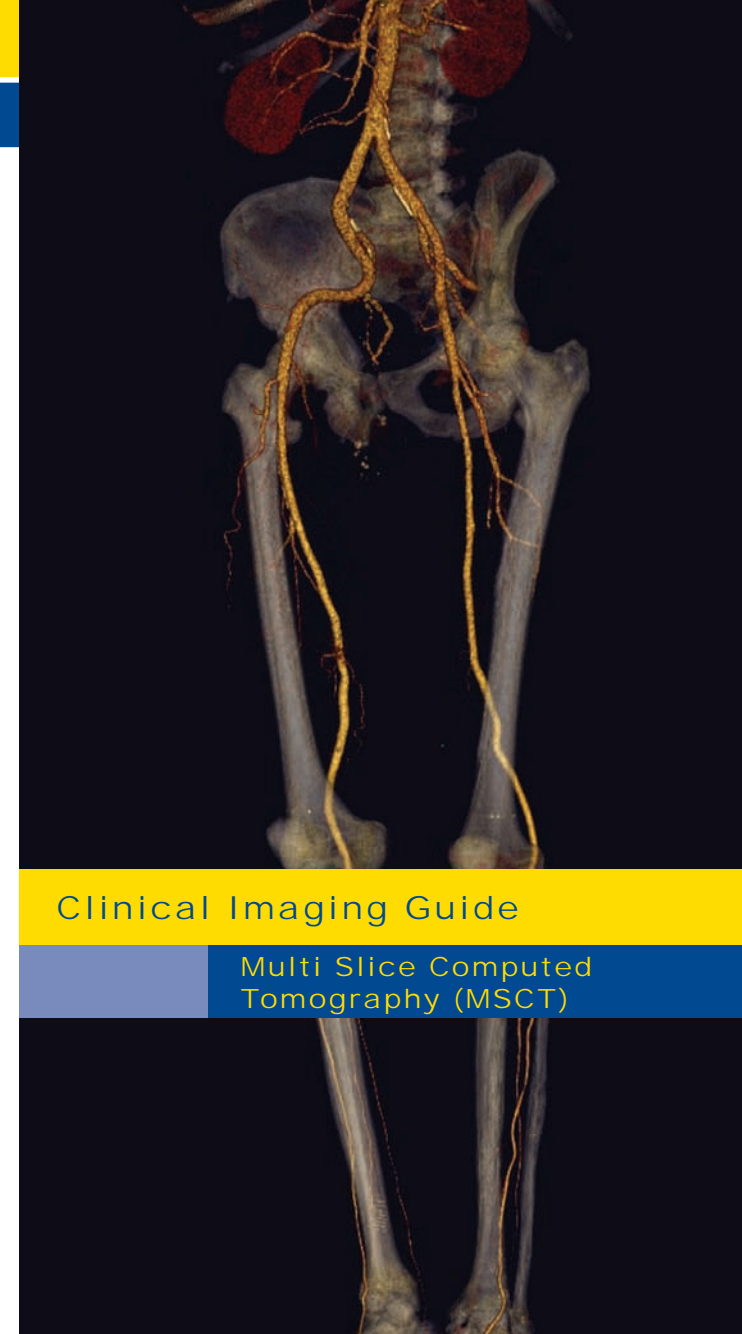
* MSCT only available at these locations

Knee Arthrograms only available at Mulgrave Road

While this leaflet is designed to be as informative as possible it is very brief in nature and should not replace the advice or guidance of your doctor or preferred healthcare professional.

Clinical Imaging Guide

Multi Slice Computed Tomography (MSCT)





CT ANGIOGRAPHY#

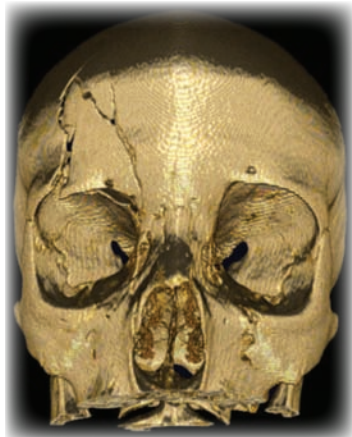
- Carotids
- Circle of Willis (COW) / Aneurysm screening or work-up
- Abdominal Aorta Aneurysm (AAA)
- Renal Arteries
- Subclavian Arteries
- Visceral Vessels
- Aortic Arch
- Thoraco-Abdominal Aorta
- Aortobifemora & Lower Limb Runoffs
- Pulmonary Embolus



**Note: Your referral for CTA examinations should include the patient's creatinine level wherever possible*

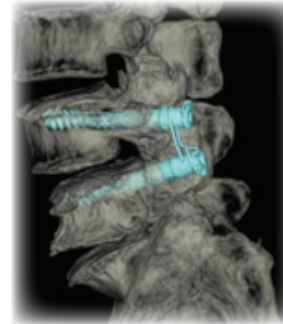
HEAD & FACIAL

- Headache
- Sinus disease
- Facial Bones
- Temporal bone / conductive hearing loss
- Internal auditory meatus / acoustic neuroma
- Stroke investigation
- Bone and brain assessment in the case of head injury
- MSCT is particularly good in the assessment of complex fractures



SPINE

- Disc herniation and protrusion
- Spinal canal stenosis
- Radiculopathy
- Spondylolisthesis
- Assessment of bony fusions
- Crush assessment



EXTREMITY

- Detection of subtle fractures
- Work-up of complex fractures
- Assessment of bony fusions
- Bone lesion work-up
- Osteochondral defects
- Knee: meniscal tears; loose osteocartilaginous bodies
- Elbow: loose osteocartilaginous bodies

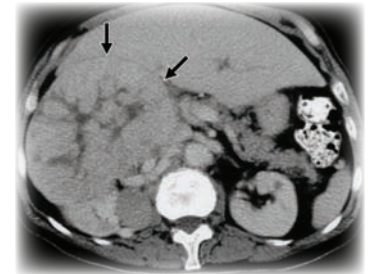
CHEST

- Haemoptysis
- Trauma
- Bronchiectasis
- Interstitial lung disease
- Pulmonary nodules
- Mediastinal mass
- Tumour staging
- Asbestos screening



ABDOMEN

- Lesion assessment & characterisation of liver, pancreas, kidneys & spleen
- Cancer staging
- Distal CBD stone / biliary obstruction
- Renal colic / CT urogram
- Non-contrast MSCT is safer, faster and more accurate than IVP for the assessment of calculi
- Inflammatory process - collection / abscess; diverticulitis; appendicitis; pancreatitis
- Obstructive jaundice / pancreatic head pathology
- Malignant ascites / peritoneal tumour plaques
- Lymphadenopathy
- Pelvimetry
- Trauma
- Contrast MSCT provides superb images of all abdominal organs



NECK

- Carotid Disease
- Tumour mass assessment
- Malignancy & tumour staging
- Tracheo-malacia
- Retrosternal extension of thyroid goitre

